



**Good news!
This farm is forever**



DAMARISCOTTA RIVER ASSOCIATION
PO Box 333
Damariscotta, ME 04543 USA
Address Service Requested

www.damariscottariver.org



- Ethical Conduct
- Responsible Governance
- Sound Finances
- Lasting Stewardship

Because of you, these fields will remain open farmland forever.

When the 68-acre Phillips Farm property on Route 1 came on the market several years ago, it was targeted as an ideal location for a Super Walmart.

However, Maine Farmland Trust (MFT), Damariscotta River Association (DRA), and many community members had other ideas for these fertile fields. In 2011, with generous support from individuals and local businesses, DRA and MFT partnered to purchase the property.

Once the land was secured, the next step to ensure it remained in agricultural use was to find a buyer willing to farm it. Enter Brady Hatch and Brendan McQuillen of Morning Dew Farm.

Hatch and McQuillen had been leasing the property for several years, in addition to farming their Newcastle

**“In all our ventures, our goals are simple.
Keep it delicious and keep it local!”**

— MORNING DEW FARM

homestead, growing high quality, certified organic produce. Their customers include markets, restaurants, caterers, cafés, and individuals who purchase Community Supported Agriculture shares, from Camden to Wiscasset.

“In all our ventures,” the farm’s website proclaims, “our goals are simple. Keep it delicious and keep it local!” As testament to Morning Dew Farm’s reputation for quality and care, and its deep connection to the community, the response to the farmers’ Indiegogo campaign to raise money toward the purchase of the farm exceeded all expectations.

Last November, Hatch and McQuillen were able to complete the purchase, ensuring this land would remain farmland and

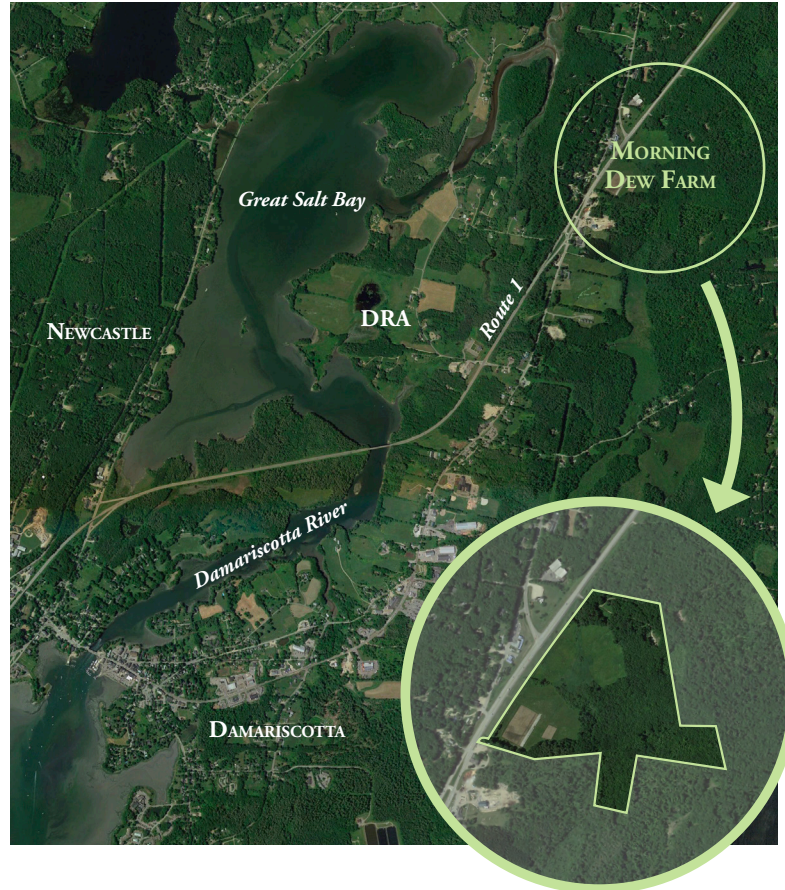
free from development forever.

Yes, forever. A permanent conservation agreement designed and placed on the land by MFT and Morning Dew Farm requires that 60 of the 68 acres remain open for forestry and farming “in perpetuity.” Will greenhouses be allowed? Yes. New barns? Farmworker housing? Yes. Big box stores? *No*.

This spring, DRA will step into the role of monitor for the conservation agreement. With the ongoing partnership of supporters like you, we will work with Hatch and McQuillen to make sure the agreement is upheld, to the good of farming and the good of the land and water.

**Thank you for caring about the future of
farming, and the health of our land and
waterways.**

*On the front and right:
Brady Hatch and
Brendan McQuillen of
Morning Dew Farm,
with their children, in
the fields at the former
Phillips Farm property.
Photos by Blue Horse
Photography. Zucchini
photo courtesy of
Morning Dew Farm.*



SAVE THE DATE!
*Celebrate with Morning Dew Farm,
Maine Farmland Trust and
Damariscotta River Association*

THURSDAY, JULY 26
5:00–8:00PM
AT THE FARM ON RTE. 1

farm fresh food • music • wine & beer